



LEMUR CONSERVATION FOUNDATION

ANNUAL REPORT

2016 · 20TH ANNIVERSARY

DIRECTORS' LETTERS

This year was cause for great celebration as the Lemur Conservation Foundation (LCF) looked back on its 20 years of work to save lemurs, with an enthusiastic eye towards our future expansion. Thanks to all of you, LCF has seen remarkable programmatic and capital growth since 1996. Our 130 acre reserve now includes the original forest habitat and Mianatra Center for Library Studies, which houses the Bladstrom Library and Malcolm C. McKenna Fossil and Bone Study Alcove. The campus also encompasses the Reed and Barbara Toomey Lemur Pavilion, Jim Toomey Forest Habitat, Marilyn K. North Lemur Lodge, Michael and Jean Martin Quarantine, Fisher Caretaker's Cottage, and Natalie Lee Quay Lemur Lotus Tower. Additionally there is a new staff and visitor house with the Elizabeth Moore Guest Suite and the recently named Researcher House in memory of Dr. Elwyn Simons and Dr. Robert Sussman.

Our last major expansion in 2005 consisted of the construction of the Mianatra Center and our second lemur forest and shelter. Since this expansion our conservation breeding colony has flourished, and we welcomed over 100 lemurs to the reserve through births and transfers. Our success in building an increasingly important safety net for wild lemurs has led to the exciting plan for our next development, which includes our third forest habitat and lemur shelter, a larger clinic and quarantine facility, and a maintenance workshop. These

additions will allow us to continue our conservation breeding program as we also increase our vital and urgent park protection, sustainable community development, and conservation education efforts in Madagascar.

We have seen many changes over the last 20 years, and LCF's mission to save lemurs through a comprehensive program combining conservation breeding, education, research, art, community programs, and habitat protection remains strong. To celebrate LCF's momentous anniversary, this year's Annual Report highlights 2016 as well as some of our proudest achievements over the past 20 years. This look back is a wonderful reminder of what can be accomplished when a group of dedicated supporters, board members, scientists, staff, interns and volunteers put their hearts and minds into protecting lemurs and preserving our planet's incredible biodiversity. We thank you ALL for your help to ensure a brighter future for lemurs.

Alison Grand

Alison Grand
Executive Director





What a wonderful year 2016 was – as we joyously celebrated Lemur Conservation Foundation’s 20th anniversary throughout! Having started with nothing but a dream, a dollar, and a tent in an unruly forest in remote Myakka City, today our reserve has blossomed into an impressive campus of 130 acres up from the original 40. This conservation transformation is due to our dedicated and visionary board, internationally renowned scientific advisors, passionate staff, and most generous donors.

It has been a thrilling journey of trials and triumphs meeting the challenge to save lemurs from extinction. Fulfilling our mission through managed breeding, scientific research, education and the promulgation of art to affect conservation continues to be a driving force. Beyond Myakka, our efforts tendriled across the sea and took root in Madagascar. There, our work has expanded a hundredfold, critical because of unprecedented havoc wreaked on the lemurs’ ancestral home.

Poet William Everson wrote an apt description about our origins: ‘Staring down in amaze at the hell of cockle we clambered through!’ Yet, we built a strong foundation and stand poised to surpass all that has gone before as we commit ourselves with renewed fervor and dedication to LCF’s future. No time for a victory lap.

Our job has never been more important. Fortunately, we are in great hands thanks to the brilliant leadership of Dr. Alison Grand and her outstanding team - Bravo and Onward!

Heartfelt gratitude to all for your ongoing advocacy,

Penelope Bodry-Sanders
 Founder, Director Emeritus,
 and Vice-Chair

OVER THE YEARS



1996

Lower Primate Conservation Foundation founded by Penelope Bodry-Sanders

1999

- 1st lemur shelter, the Reed and Barbara Toomey Lemur Pavilion and the Emily Fisher Caretaker's Cottage completed
- Initial 11 lemurs from Duke Lemur Center arrived



2003

Museum and Interpretive Center constructed in Tampolo, Madagascar

2004

8000 trees donated by Judy Rasmuson planted in Red Dog Woods (future lemur forest habitat)

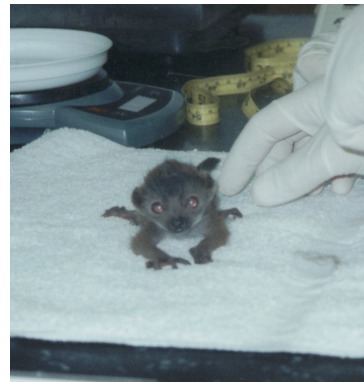


2000

Grand opening of Myakka City Lemur Reserve

2002

1st birth at LCF – Alejandro, a male mongoose lemur



1997

Initial 40 acres in Myakka City, Florida purchased

2001

- Researcher's House completed and 1st Field School with Dr. Linda Taylor from University of Miami conducted
- Lower Primate Conservation Foundation name officially changed to Lemur Conservation Foundation



2005

- Mianatra Center for Lemur Studies, Marilyn K. North Lemur Lodge, Jim Toomey Woods Forest habitat, and Michael and Jean Martin Quarantine constructed
- *Ny Aiay Ako (Ako the Aye-Aye)*, written by the late Dr. Alison Jolly, published by LCF



2006

- LCF receives certification from the Association of Zoos and Aquariums (AZA)
- Reed and Barbara Toomey Tranosoa Tampolo guest house and research bungalows constructed in Tampolo, Madagascar

2009

The Centre EnviroKidz, an environmental education classroom and community center, constructed in Tampolo, Madagascar



2011

Recertification by the Association of Zoos and Aquariums (AZA)

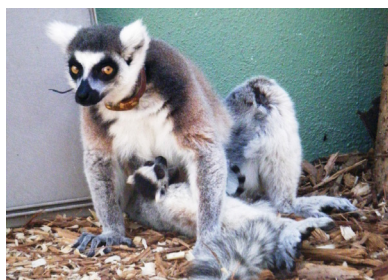
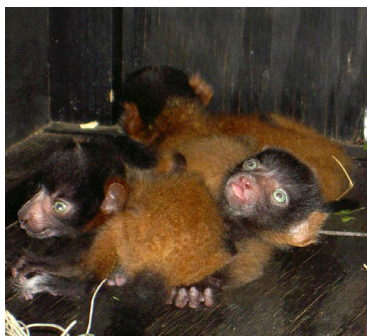
2015

- Natalee Lee Quay Lemur Lotus Tower erected in the Jim Toomey Woods
- LCF hosts AZA's Prosimian Taxon Advisory Group workshop and meeting



2007

First red ruffed lemur births (triplets)



2010

First ring-tailed lemur birth

2014

New Madagascar program in Anjanaharibe-Sud Special Reserve started

2016

LCF's 20th Anniversary Celebration



RESERVE

LCF's reserve has seen much growth since the original purchase of 40 acres of land in Myakka City, Florida in 1997. Now encompassing 130 acres, LCF houses 56 lemurs in two multi-acre forest habitats and two lemur shelters. The Mianatra Center for Lemur Studies serves as our base of operations on the reserve, and our three on-site houses provide accommodations for visiting researchers, staff, and interns.

But our growing lemur populations need more room. LCF has embarked on the next major expansion since we doubled our lemur space in 2005. The Leap for Lemurs Campaign launched in 2016 will fund a third forest habitat; an added lemur shelter; and expanded clinic and quarantine facilities to support the conservation breeding program for our current population, which has almost tripled since 2005, with room to house future generations.



NOW
Mianatra Center.



THEN
Goats assist with forest maintenance in 2001.



NOW Reserve Campus.



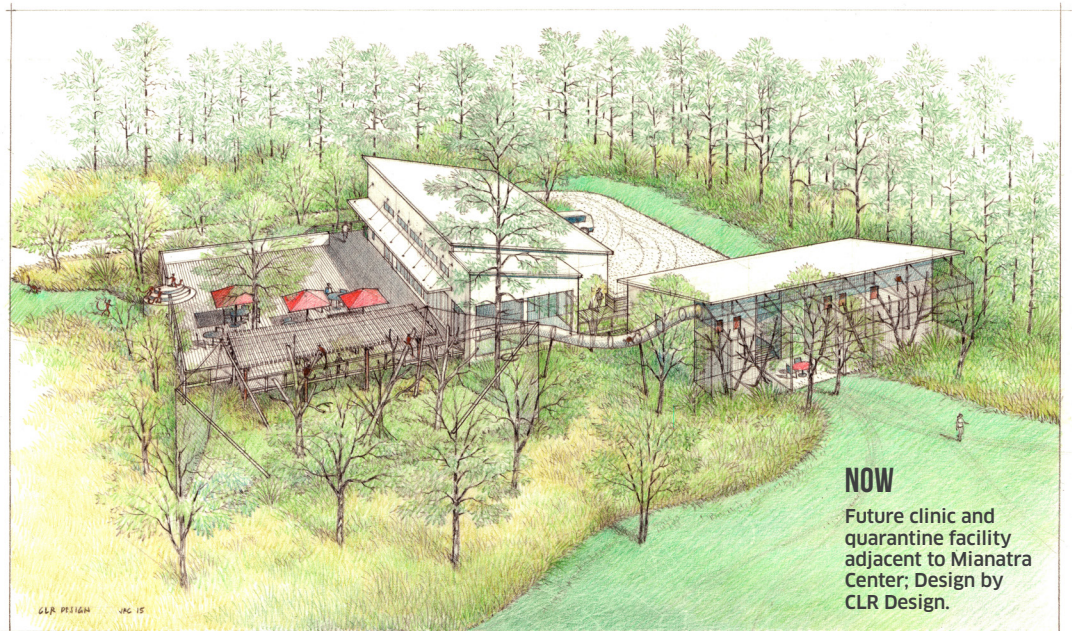
THEN Bonnie Larsen and Penelope Bodry-Sanders at the original campsite in 1999.



THEN Toomey Pavillion Construction in 1999.



NOW Bladstrom Library.



NOW
Future clinic and
quarantine facility
adjacent to Mianatra
Center; Design by
CLR Design.

LEMURS

While incorporated in 1996, the first lemurs did not arrive at LCF (then the Lower Primate Conservation Foundation) until 1999. On November 19, 1999, 11 lemurs — three ring-tailed, five red fronted, and three gray bamboo — arrived from the Duke Primate Center to begin LCF's colony. Over the following 17 years 130 lemurs were either born or transferred to LCF, and 56 lemurs called the reserve home in 2016. In November 2000, LCF received their first AZA SSP breeding recommendation for mongoose lemurs, officially starting LCF's managed breeding program with the arrival of two mongoose lemurs, and welcoming the reserve's first offspring on April 18, 2002. Since then over 60 infants of six different species have been born on the reserve, including 8 infants in 2016 — a record high for LCF. This year LCF also welcomed a new collared lemur, Jolene, from the Bronx Zoo to create a new breeding pair at the reserve.

On **NOVEMBER 19, 1999** we

STARTED WITH 11 LEMURS

♂ 1

♀ 2

RING-TAILED
LEMUR
L. catta

♂ 3

♀ 2

RED FRONTED
LEMUR
E. rufus

♂ 2

♀ 1

GRAY BAMBOO
LEMUR
H. griseus

2002

FIRST LEMUR
BIRTH ON RESERVE
(Mongoose Lemur)

CURRENTLY there are

56 LEMURS

♂ 3

♀ 3

COLLARED
BROWN LEMUR
E. collaris

♂ 5

♀ 1

COMMON
BROWN LEMUR
E. fimbria

♂ 8

♀ 8

MONGOOSE
LEMUR
E. mongoz

♂ 1

♀ 0

SANDFORD'S
BROWN LEMUR
E. sanfordi

♂ 5

♀ 2

RED RUFFED
LEMUR
V. rubra

♂ 9

♀ 11

RING-TAILED
LEMUR
L. catta



THEN

Alejandro, a mongoose lemur, was born on April 18, 2002. He was the first lemur to be born on the reserve.

Since 1999, there have been a **TOTAL** of

130 LEMUR BIRTHS AND TRANSFERS TO LCF

♂ 6 ♀ 4 COLLARED BROWN LEMUR <i>E. collaris</i>	♂ 4 ♀ 2 CROWNED LEMUR <i>E. coronatus</i>	♂ 6 ♀ 1 COMMON BROWN LEMUR <i>E. fulvus</i>	♂ 20 ♀ 14 MONGOOSE LEMUR <i>E. mongoz</i>	♂ 3 ♀ 2 RED FRONTED LEMUR <i>E. rufus</i>
♂ 4 ♀ 4 SANFORD'S BROWN LEMUR <i>E. sanfordi</i>	♂ 2 ♀ 3 GRAY BAMBOO LEMUR <i>H. griseus</i>	♂ 20 ♀ 16 RING-TAILED LEMUR <i>L. catta</i>	♂ 12 ♀ 7 RED RUFFED LEMUR <i>V. rubra</i>	

IUCN RED LIST STATUS

MONGOOSE LEMUR <i>E. mongoz</i> 2000 V now CE	COMMON BROWN LEMUR <i>E. fulvus</i> 2001 NT now NT	RING-TAILED LEMUR <i>L. catta</i> 1999 V now E
COLLARED BROWN LEMUR <i>E. collaris</i> 2008 V now E	SANFORD'S BROWN LEMUR <i>E. sanfordi</i> 2006 V now E	RED RUFFED LEMUR <i>V. rubra</i> 2002 CE now CE

NT Near Threatened **V** Vulnerable **E** Endangered **CE** Critically Endangered

* Years refer to when the species first came to the reserve.



NOW

Ansell with infant Otter.

© CAITLI



THEN

Akako, one of the original red fronted brown lemurs to arrive at LCF.

MADAGASCAR

The Tampolo Forest became LCF's sister reserve in Madagascar in 2003. For nearly a decade, LCF worked on conservation and sustainable development initiatives at Tampolo. LCF supported the construction of a Museum and Interpretive Center and Centre EnviroKidz classroom that have hosted hundreds of Malagasy students and a guesthouse that served as a basecamp for visiting researchers. Art, environmental education, and reforestation were other LCF-supported projects carried out at Tampolo.

In 2014, LCF started a new conservation initiative in Madagascar with its support of Anjanaharibe-Sud Special Reserve (ASSR). Since then, the program has greatly expanded, and LCF is now supporting nearly a dozen conservation, educational, and research programs as part of our work in and around ASSR.

Camp Indri was completed this year as our team finished construction of the fourth tent shelter and covered picnic table. This is the only tourist and research camp within ASSR, a 108 square mile primary rainforest reserve. The camp will increase visitors, providing a valuable source of income for the reserve and community.



9 LEMUR SPECIES
FOUND DURING
THE ASSR SURVEY
INCLUDING 1 NEW
GROUP OF SILKY
SIFAKAS.





NOW
ADES Stove distribution.

200

FUEL
EFFICIENT STOVES
DISTRIBUTED

ASSR HIGHLIGHTS

- 1 Raised more than 6000 trees in two nurseries
- 2 Completed the first formal lemur survey in ASSR in nearly 15 years
- 3 Supported a Malagasy Graduate student
- 4 Introduced the AKO books into Befingotra schools and hosted four student groups to Camp Indri
- 5 Provided family planning services to over 100 women in seven villages
- 6 Organized the World Lemur Festival in Andapa in which over 1500 people participated
- 7 Organized trainings for sustainable agriculture (yam plantings)
- 8 Conducted several forest monitoring missions with Madagascar National Parks
- 9 Harvested nearly 4000 paratilapia fish from our model pond and reintroduced 2000
- 10 Distributed 200 fuel-efficient stoves



THEN
People in forest at Tampolo.

RESEARCH

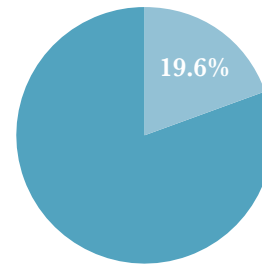
VISITING RESEARCHERS

Reproductive biology, foraging cognition, social behavior and seasonal activity patterns were topics researchers focused on this year. Colorado College master's student Rebecca Twinney studied mongoose lemurs and how their activity cycle may change with season and temperature. Another master's student, Nicole Perrone from Kent State University, examined differences in parenting strategies and how this affects stress hormone production. In April, we were joined by Dr. Elena Cunningham of New York University and her research assistant, Virginia Hamilton, who studied lemur learning and foraging cognition. Elena's work is part of a planned three year research project at LCF. Lastly, we were pleased to host Dr. Anne Millhollen from the University of Oregon. With Dr. Erik Patel, she examined latrine behavior in ring-tailed lemurs and used our lemur colony to build on previous observations made in Madagascar.

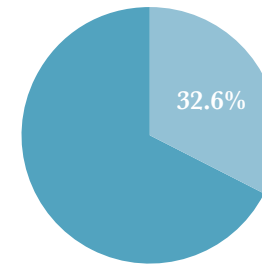
FIELD SCHOOLS

In March, LCF welcomed eight undergraduate students to a field school run by Dr. Krista Fish of Colorado College. Students learned techniques for studying non-human primates and conducted their own independent research projects. This was the first time Colorado College ran a field school at LCF. A second field school was run by Monica Mogilewsky, LCF's former director of research and operations. Now working towards her Ph.D. at Portland State University, Monica trained master's student Chelsea Rose in field methods for studying non-human primates, with an emphasis on red ruffed lemurs which is the species they are both studying for their graduate work.

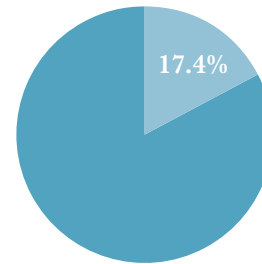
LCF RESEARCH PROJECT TOPICS



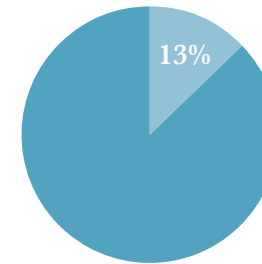
BEHAVIOR
9 studies



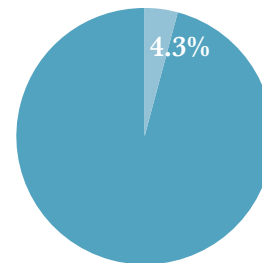
COGNITION & LEARNING
15 studies



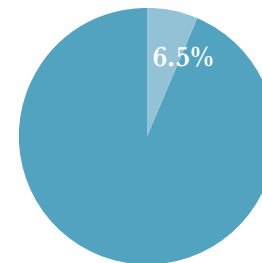
COMMUNICATION
8 studies



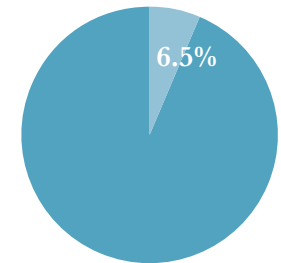
ECOLOGY
6 studies



HEALTH AND VETERINARY MEDICINE
2 studies



PHYSIOLOGY
3 studies



REPRODUCTIVE BIOLOGY
3 studies



NOW

Field school students observe lemurs.



THEN

A Yale undergrad performs studies in 2004.

IN MEMORIAM

**“IF WE CAN’T CONSERVE
MADAGASCAR, WE CAN’T
CONSERVE THE WORLD.”**

— *ROBERT SUSSMAN*

Dr. Elwyn Simon with original lemurs in 2000 (right). David Haring, Dr. Robert Sussman, and Dr. Malcolm McKenna tour LCF’s forest habitat (below).



In 2016 we mourned the passing of two distinguished scientists who made remarkable contributions to the fields of anthropology, particularly the evolution of human and primate behavior, and graciously shared their expertise with the Lemur Conservation Foundation as members of our Scientific Advisory Council. We will be forever grateful for their contributions and help to ensure that LCF’s guiding principles — from our research programs to our husbandry practices — are grounded in science.

DR. ELYWN SIMONS

Dr. Elywn Simons received his bachelor’s degree from Rice University, master’s and doctoral degrees from Princeton, and an additional doctorate from Oxford. He taught at Yale before joining the faculty at Duke University in 1977. He served for many years as the Director of the Duke Lemur Center, where he worked to diversify and develop a viable colony of lemurs facing imminent extinction to act as a second line of defense against threats in the wild but to also enhance our knowledge of some of the most rare primate species in the world.

DR. ROBERT SUSSMAN

Dr. Robert Sussman earned his bachelor’s degree and master’s degree from UCLA University, working with primatologist Jack Prost. He then received his doctoral degree in Anthropology at Duke University under John Buettner-Janusch. He then joined the Washington University faculty in 1973 after two years of teaching at Hunter College. During his successful career, Bob co-founded Beza Mahafaly Reserve in Madagascar, an important research site for lemur studies, and mentored 30 graduate students! The impact of mentoring this number of graduate students cannot be overstated as many of these students carry on his legacy through their research and sharing what they learned from Bob with the next generation of primatologists.

'HE [SIR WILFRID LE GROS CLARK] ONCE EXPRESSED TO ME THAT I, AND IN FACT ALL YOUNGER COLLEAGUES, WERE FORTUNATE BECAUSE WE WOULD SURELY LIVE TO SEE MANY NEW DISCOVERIES OF FOSSILS CONCERNING THE COURSE OF HUMAN EVOLUTION. THIS HAS HAPPENED TO AN EVEN GREATER EXTENT THAN HE COULD HAVE IMAGINED.'

— *ELWYN SIMONS IN A SEARCH FOR ORIGINS*

THEN

(2001/2002)

- 1** Undergraduate research project about lemur communication
- 1** Visiting researcher (Dr. Linda Taylor from the University of Miami)
- 0** Graduate students
- 1** Field School (University of Miami)

NOW

- 4** Research projects about reproductive biology, lemur behavior, and cognition
- 5** Visiting researchers from Kent State University, New York University, Colorado College and the University of Oregon
- 2** Graduate level student projects
- 2** Field schools (Colorado College and Portland University)



Dr. Ian Tattersall, Dr. Robert Sussman, and Dr. Linda Taylor at meeting reception in 2011.

Thanks to the guidance of our Scientific Advisory Council,

LCF HAS SUPPORTED:

- 15** RESEARCH INTERNSHIPS
- 29** FIELD SCHOOLS
- 217** STUDENTS IN FIELD SCHOOLS
- 27** UNIVERSITIES AND COLLEGES
- 11** GRADUATE LEVEL RESEARCH PROJECTS
- 21** UNDERGRADUATE LEVEL RESEARCH PROJECTS
- 14** STUDIES CARRIED OUT BY PROFESSIONAL RESEARCHERS
- 46** TOTAL RESEARCH PROJECTS

EDUCATION

EDUCATION THEN

Raising awareness of the importance of lemurs and their unique but periled existence is at the core of LCF. The Ako Conservation Education Project, based around the late Dr. Alison Jolly's children's book series featuring lemurs, has been our most prominent education program. We have published six Ako books and posters and distributed them throughout Madagascar and the U.S. Thousands of children have read them. LCF has also successfully run several Teacher's Institutes for Conservation Biology, a program focused on training teachers how to better integrate conservation issues into their curriculum. By educating people about lemurs, we help ensure they remain a priority for generations to come.



THEN Snooty's birthday celebration in 2013.

Ako Project

2016

6 BOOKS
AVAILABLE WITH
SUPPLEMENTARY
POSTERS



NOW St. Stephen's Episcopal School visit.

FLORIDA PARTNERSHIPS

In Florida, LCF was pleased to promote the Ako Conservation Education Project with visits to the reserve by St. Stephen's Episcopal School and during our Family Day event. We also promoted the program through the Great American Teach-In, as well as events at the South Florida Museum and with EdExploreSRQ, a platform connecting Sarasota County teachers to experiential learning opportunities for their students.



THEN Teacher's Institute in 2008 with instructor, Dr. Linda Taylor.

MADAGASCAR TEACHER FIELD TRAINING PROGRAM

Between July and September, a team of seven Malagasy teachers worked together to monitor populations of Verreaux's sifaka and ring-tailed lemurs in Berenty Reserve as part of the ENS field training program. Since 2014, the Ecole Normale Supérieure (ENS) of the University of Antananarivo has been running training programs in Berenty to help the next generation of Malagasy educators learn how to study lemurs. The program was developed collaboratively by Dr. Hantanirina Rasamimanana of ENS and the late Dr. Alison Jolly, building on their long-term lemur monitoring initiative in Berenty.

Ako Project

2016

181 STUDENTS
IN MADAGASCAR
REACHED AT 3
SITES

AKO IN MADAGASCAR

Through a continued partnership with Nature's Path EnviroKidz and the generous support of the Jolly family, the Ako Project reached schools near three reserves in Madagascar: Berenty, Maromizaha and Anjanaharibe-Sud. These workshops trained teachers in ways to educate others about the environment and piloted new Ako lessons with students. Ako in Madagascar was carried out by the Malagasy association of primatologists known as G.E.R.P. (Groupe d'Étude et de Recherche sur les Primates) in collaboration with the University of Michigan-Dearborn.



NOW In November 2016, Ako went to Befingotra.



THEN The first calendar created by Barbara Sandler (left). Art Center Sarasota's presentation of Vanishing Species in 2014 (bottom).



Lemur Conservation Foundation, though born in science, has used art since its inception to help broadcast its critical message. Art emotionally links lemurs and people, inspiring empathy, compassion, and action.

Even before the reserve's first building was completed (the Reed and Barbara Toomey Lemur Pavilion), we invited New York artist Barbara Sandler to decorate it, as we wanted everything on campus to be beautiful as well as functional. Barbara painted a frieze around the door embellished by fruits loved by the animals. She also went on to create LCF's first image for the 1999 lemur calendar which became a yearly tradition.

Over the past twenty years, LCF has amassed a first class art collection of paintings, sculptures, and two art films. We also added the Natalee Lee Quay Lemur Lotus Tower, an amazing free-standing art piece used by both lemurs and researchers located in one of the lemur forests. Two public art exhibits were presented in Sarasota featuring LCF's work, most notably Art Center Sarasota's beautiful exhibition of the LCF collection titled "Vanishing". In addition to physical art, LCF sponsored the Art/ScienceEnvironmental Imperative workshop for scientists and artists to work collaboratively to forward conservation. Several children's art workshops have been underwritten in

Madagascar as well.

LCF is unique as the only conservation organization in the world that includes art in its mission statement. As such, LCF has a working committee of artists and curators to oversee the art collection plan and maintains a database to keep track of its holdings. In 2016, there were several art events worthy of special mention: Camille Wainer's film *MadagaSCARS* has now been screened in 15 international film festivals ranging from Ireland, the UK, Italy, and Poland, to Serbia, Australia, and Kuala Lumpur, and nationally in Austin, Texas, New York City, and Orlando, Florida.

Dustin Juengel's painting of a ring-tailed lemur used for the 2016 calendar was borrowed by Ringling College of Art and Design for an exhibition titled: *Observation/Reference/Gesture - Contemporary Paintings*. Dustin and Penelope Bodry-Sanders were invited to speak at a gallery talk related to the exhibit.

Following LCF's tradition of creating beautiful and functional buildings, Mary Fussell's pastel of a mongoose lemur family was photoshopped to create a new door for the Marilyn K. North Lemur Lodge.



NOW Calendar Artwork titled 'Lemur' by Dustin Juengel.

EVENTS

In 2016 the Lemur Conservation Foundation held a variety of festive events in both Sarasota and New York in celebration of our 20th Anniversary. These events were tailored to both look towards the future and pay tribute to the history of the organization.

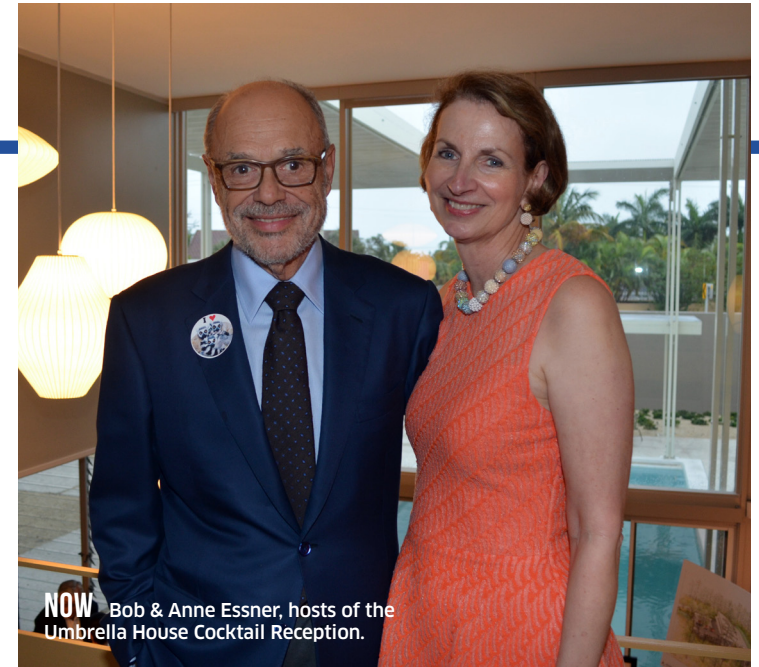
We kicked off the year with a cocktail reception hosted by Anne and Bob Essner at the Umbrella House, a renowned mid-century modernist Sarasota home designed by architect Paul Rudolph. This was an especially fitting way to begin our celebrations since the seed money to start the Lemur Conservation Foundation came from the sale of another famous Paul Rudolph house, the Green Residence, located in Honesdale, Pennsylvania.

Our second event of the year, our Family Day at the Lemur Reserve, honored the importance of kids in the future of lemur conservation. Young conservationists and lemur enthusiasts gathered at the lemur reserve in Myakka City for a private tour and to learn more about lemurs, biodiversity, and how they can make a difference for lemurs as well as local wildlife.

Our third event took us to Joe's Pub in New York City for a concert by Razia Said and her Malagasy band where we highlighted LCF's efforts in Madagascar through songs and speeches. The event sponsored by William and May Louie included splendid compositions inspired

by Razia's Malagasy influences and a silent auction featuring artwork by Craig Rubadoux, jewelry by Niki Fisk and Valentin Magro, and a stay at a Villa in Lake Como, Italy donated by Judy Veale.

Celebrations continued with private dinners in the homes of LCF Trustees, Patrice Pantello and Elizabeth Moore. These intimate dinners not only gave supporters the opportunity to learn more about LCF's work in the US and



NOW Bob & Anne Essner, hosts of the Umbrella House Cocktail Reception.



NOW Patrons party.



THEN Razia at Mifohaza event in 2011 (above).

Madagascar, they were a nod to the fact that LCF became a reality over lunch in a restaurant across the street from the American Museum of Natural History in New York.

We concluded our celebrations with two events to show our immense appreciation to those who have supported our work over the past 20 years — The Patron’s Party and Annual Open House. We are so grateful to everyone who attended the events, and we would like to extend a special thanks to Emily Fisher Alexander, Fete Catering, Benchmark Environanalytical, Inc., Myakka Communications, Inc., and Barbara Anson Realty & Associates for sponsoring these incredible days of celebration and appreciation.



THEN Blair Brown, Kipling Sanders, and Penelope Bodry-Sanders at the 2013 Gala.

INTERNS

LCF offers a seven month primate husbandry internship which presents an exceptional opportunity to receive training at an AZA certified-related institution with a strong commitment to conservation, education, and animal care. In 2016, LCF also started a three month husbandry internship to help student interns gain experience related to their education. In 2016, LCF welcomed seven new interns to the reserve. Our busy interns provide intensive support while completing daily animal care, training projects, animal enrichment, reserve maintenance, and continuing professional development by attending workshops and conferences. Special thanks go out to our dedicated interns from 2016: Andrew Carlin, C'aira Cassavant, Emily Bach, Ji Park, Leslie Hill, Shannon McCabe, and Tyler Jackson.



Shannon McCabe (2016)



Leslie Hill (2016)



Ji Park (2016-2017)



Tyler Jackson (2016)



Andrew Carlin (2016)



Emily Bach (2016)



C'aira Cassavant (2016)

8 MONTHS
AS INTERN, 6
YEARS AS
VOLUNTEER

“LCF WAS A HOME AWAY FROM HOME. FROM THE MOMENT YOU PULL INTO THE DRIVE, THE AIR IS DIFFERENT AND CALMING. IT WAS A PLACE OF GREAT LEARNING, AND WHERE I FOUND MY PASSION FOR PRIMATES. I WAS ABLE TO MEET A LOT OF AMAZING PEOPLE THERE, WHO I CAN STILL CALL VERY CLOSE FRIENDS, AND HAVE BEEN ABLE TO TURN TO WITH QUESTIONS WHILE I CONTINUE TO GROW IN MY FIELD.”

— RACHAEL PIPITONE



THEN Dr. Ian Tattersall and Penel Bodry-Sanders



DIANE LEDDER

Retired Director of Community Relations — Walt Disney World Co. Sarasota, Florida

Now retired, Diane served as director of community relations for Walt Disney World Co., leading charitable giving and community relations strategy. She has also held leadership positions at the San Diego Zoo’s Safari Park and the Zoological Society of Florida. Diane currently serves on International Rhino Foundation’s Board of Directors and Communications Committee.



KATHLEEN MILLER

Community Service Volunteer Wyoming & Florida

Kathy was born in New York and migrated to the Midwest and attended William Rainey Harper College. During her time in St. Louis she spent five years as a docent at the St. Louis Zoo. Kathy was fortunate enough to work and study under Ingrid Porton “Our Lady of the Lemurs”. She also taught classes to elementary students using a variety of live amphibians, reptiles, bird and mammals. A highlight of her time there was when she served as a surrogate mother for three baby gorillas. Kathy and her husband now split their time between Anna Maria, Florida and Dubois, Wyoming where she continues her community volunteering.

FINANCIALS

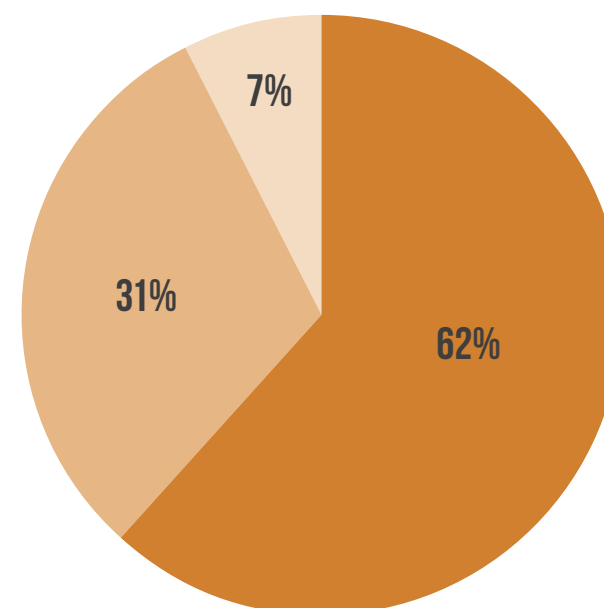
STATEMENT OF ACTIVITIES

<i>REVENUES</i>	<i>UNRESTRICTED</i>	<i>TEMPORARILY RESTRICTED</i>	<i>TOTAL</i>
Contributions	\$400,050	\$205,588	\$605,638
Operations	\$4,208	—	\$4,208
Unrealized and realized gain on investments	\$346,024	—	\$346,024
Interest and dividends, net	\$233,811	—	\$233,811
Other	\$4,102	—	\$4,102
Released from restriction	\$238,596	(\$238,596)	—
Total revenues	\$1,226,791	(\$33,008)	\$1,193,783
<i>EXPENSES</i>			
Program services	\$452,263	—	\$452,263
Management and General	\$226,075	—	\$226,075
Fundraising	\$54,396	—	\$54,396
Total revenues	\$732,734	(\$33,008)	\$732,734
<i>CHANGE IN NET ASSETS</i>	\$494,057	(\$33,008)	\$461,049
Net assets at beginning of year	\$6,225,383	\$405,488	\$6,630,871
Net assets at end of year	\$6,719,440	\$372,480	\$7,091,920

STATEMENTS OF FINANCIAL POSITION

<i>ASSETS</i>	<i>2016</i>	<i>2015</i>
Cash and cash equivalents	\$474,435	\$330,892
Investments	\$4,733,169	\$4,377,962
Accrued interest receivable	\$18,593	\$22,412
Prepaid expenses	\$4,235	\$4,301
Inventory	\$17,228	\$17,228
Property, plant and equipment, net	\$1,838,308	\$1,865,897
Collections	\$36,251	\$36,251
Total assets	\$7,122,219	\$6,654,943
<i>LIABILITIES</i>		
Accounts payable	\$22,793	\$11,020
Accrued expenses	\$7,506	\$9,352
Deferred revenue	—	\$3,700
Total liabilities	\$30,299	\$24,072
<i>NET ASSETS</i>		
Unrestricted - operating	\$2,086,271	\$1,947,421
Unrestricted - board designated	\$4,633,169	\$4,277,962
Temporarily restricted	\$372,480	\$405,488
Total net assets	\$7,091,920	\$6,630,871

EXPENSES BY TYPE



OPERATIONS	\$452,263
MANAGEMENT AND GENERAL	\$226,075
FUNDRAISING	\$54,396
TOTAL	\$732,734

	<i>2016</i>	<i>2015</i>
Total liabilities and net assets	\$7,122,219	\$6,654,943

DONORS

\$50,000 +

- John Alexander & Emily Fisher Alexander
- Elizabeth Moore
- Judy Rasmuson & Ron Wallace

\$25,000 +

- Penelope Bodry-Sanders & Mack Goode
- Mark Braunstein & Katharine McKenna
- Anne & Robert Essner
- Nature's Path Foods, Inc.
- Maysie D. Starr

\$10,000 +

- Community Foundation of Sarasota County
- Felburn Foundation
- Rasmussen Family Foundation
- Sara Roberts Foundation

\$5,000 +

- Eugene & Anne Beckstein/Beckstein Charitable Fund
- Joyce & Edward McDowell
- Mello & Henny Nieuwenhaus
- Patterson Foundation

- Joanna K. Trygstad
- Brenda Wood/OneFamily Foundation

\$2,500 +

- Anne & Walter Bladstrom
- Laura Carlson
- Clay W. Hamlin, III/Hamlin Family Foundation
- Anna Hannon Gill
- Penelope Kingman
- William & May Louie
- Madecasse
- Monika & C.K. Patel
- Craig Rubadoux
- Judith E. Rubin
- Thrivent Financial for Lutherans
- Charlene & Phillip Wolff

\$1,000 +

- Dr. Tamara Bettinger
- Country Oaks Enterprises
- Dr. Virginia L. Cunningham
- Gail Erickson & Christa Rice
- John Freeman & Dr. Jennifer Swanson
- Dr. Alison Grand
- Stephanie Guest & Richard Ellis
- Kate Lippincott
- Jean M. Martin
- Pat & Ron Pantello
- Scott Riviere

- Stuart Salenger/Stuart Salenger Foundation Inc.
- Sarasota Architectural Foundation
- Dr. Linda Winkler
- Peter Wunsch
- Zoological Association of America, Inc.

\$500 +

- Dr. Mary Aaland
- Austin Allen/Allen Family Foundation
- Ann & Steven Anderson
- Andrew Sabin Family Foundation
- Jacquelyn & David Bell
- Jean Blackburn
- Elizabeth & John Dayani
- Emporia Friends of the Zoo
- Sue & Bartlett Geer
- Marsha & Robert Gerber
- Elliott M. Himelfarb & Janet R. Minker
- Kenneth Lemon
- Lisa & Steve McLennan/Fidelity Charitable Gift Fund
- Lois Meredith & Allan R. Wagner
- Christopher Metcalf
- Dr. Vivian Pan & Dr. Mark Norell
- Nancy Peterson
- Julie D. Rees
- Maryellen Roberson
- Connie & Ted Roosevelt
- Peter & Mary Ruggles
- Lane & Virginia Taylor

- John Walker
- Walt Disney Company Foundation

\$250 +

- Anonymous
- Barbara Anson
- Benchmark Enviroanalytical, Inc.
- Susan Brainerd & Alan Quinby
- Janet Bridgford
- Blair Brown
- Peter & Judy Carlin
- Duncan A. & Ellen T. Christie
- Sandra Cilone
- James & Nancy Curtis
- Elizabeth DeGaetano & Jeffery Gillers
- L'Oréal Dunn
- Dr. Gina Ferrie
- Barbara Frey
- Susan Givens
- Frederick J. & Patricia J. Graboske
- Greater Houston Chapter AAZK
- Rebecca Harvey
- Karleen Kenney
- Steven & Kate Kruza
- Mary K. LeCroy
- Joseph & Carolyn Losos
- Grace Marmorstein
- Gila & Michael Meriwether
- Beau & Pearl Pinkerton
- Safari West, Inc.
- Benoit Jadoul & Diana Shih

- Jennifer Grand Shuffler
- Russell & Sharon Stephens
- Vickie Stout
- Laila Williamson
- Kenneth & Vicki Wilson

\$50 +

- Noah Christopher Alvey
- Russell Andrade
- Teagan Baldwin
- Kris Becker
- Darlene Benzon
- Kathryn Bishop
- Leigh Anne Bonney
- Michael Boulger
- Chelseay Boulos
- Fiona Brady & Carl Mehling
- Michael Brehler
- Kimball Bridgford
- Holly Schneider Brown
- Rylan Budde
- Robert Burke
- Lorne & Heather Burnett
- Ray Burnett
- The Conserve Forever Foundation
- Karen Camp
- Kathryn A Carr
- Marcey Carroll
- James & Kathleen Chapman
- Linda Chitti
- Paula Clemow

- Laurel B. Cohen
- Barbara & Robert Croucher
- Roseline & Douglas Crowley
- Hugh & Rachel Culbreath
- Gillian Daniels
- Heather DeMelia
- Michael Dinsmore
- Francine Dolins
- Jo Anna Dvorak
- Jonay Dvorak
- Devin Edmonds
- Dr. Kurt Ela
- Erica Engstrom
- Amelie Fanciullo
- Mary Fiorenza & Michael Edmonds
- Catherine Fisher
- Franz Tractor Company
- Amy Freeland
- Larry & Beth Gardner
- Coby & Barbara Gaulien
- Todd Gilliom
- Daniel Gilmore
- Denise & Steven Glazer
- Charles & Karen Goetz
- Gertrude & Alan Goldberg
- Bobbie Grand
- Brian Grossi
- Sandra Hahn
- Gwenne Heiser
- David Hess
- David & Marsha Hill
- John & Patricia Hogan
- Marjorie Horne

- Robert Hornsby
- Terry Hudson
- Ken Hughes
- Sadie Hutchison
- Barbara Hyde
- Job's Daughters International Bethel #2
- Eileen Kennedy
- Caitlin Kenney
- Martha S. Kiser
- Michael S. & Kathleen W. Klineman
- Suzanna Kopans
- Lisa J Kravitz
- Thomas Krueger
- Carolyn Krumrey
- Rob Laban
- Nadav Lapidot
- Bruce & Judy Larson
- Avery Libby
- Michael Lidschreiber
- Beth & David London
- Dr. Thomas E. Lovejoy
- Lou & Ann M. Marinaccio
- Beverly Mathias
- Noralyn Marsahll
- Andrew McDaniel
- Sandra McDonough
- Frederick Mecke
- Thomas L. Miller
- Monica Mogilewsky
- James Mooney
- David & Cynthia Morriss
- Caryn Morrow
- Myakka Communications, Inc.
- Michelle & Jonathan New
- R. T. Nielsen & Patricia M. Dooley
- Orin Oberlander
- Tim O'Brien
- Christine Odenkirk
- Mark Ormond
- Gary Osinski
- Aaron Pappa
- Douglas & Phyllis Paulin
- Laurel Poertner
- Charles Preston
- Marsha Pryor
- Rebecca Quillen
- Robert B. Radin
- Jonathan Raffé
- Oliver Rank
- Christine Reed
- Elizabeth Rich
- Barbara Robinson
- Arthur Rogers
- Lesley Rogers
- Priscilla & Kermit Roosevelt
- Nora Rosenbaum
- Richard Rothstein
- Jacqueline Rouff
- Lisa Rubin
- Gale & Alex Rydel
- Joe & Anne Santore
- Sarasota Moving Company, Inc.
- Sharon Sasse
- Dr. Melissa Schaefer
- William Schill
- Ina Schnell & Arthur Ancowitz
- Marilyn Schroeter
- Maiko Shoda
- Leanne Silverman
- Steven A. Sklaver
- Peter Stern Kiok
- Zuleyma Tang-Martinez
- Josephine F. Theakos
- Axel Traugott
- Marianne Ulsund
- Ron Hall & Jody B Underhill, CPA
- Dr. Natalie Vasey
- Judy Veale
- Martina Venz
- Kimberly Verska
- Ron & Carolyn Vioni
- Katie Virun
- VOYA Foundation
- Lisa Walker, BSc
- Bucky Wetherell
- Keith Whipple
- Laura & James Winefordner
- Linda Wolf
- Dr. Anthony & Lindy Wolk
- Jolie & Staci Wright
- Anita Yantz
- Arlene Zarembka
- Tristan Zimmerman
- Dr. Jessie Williams

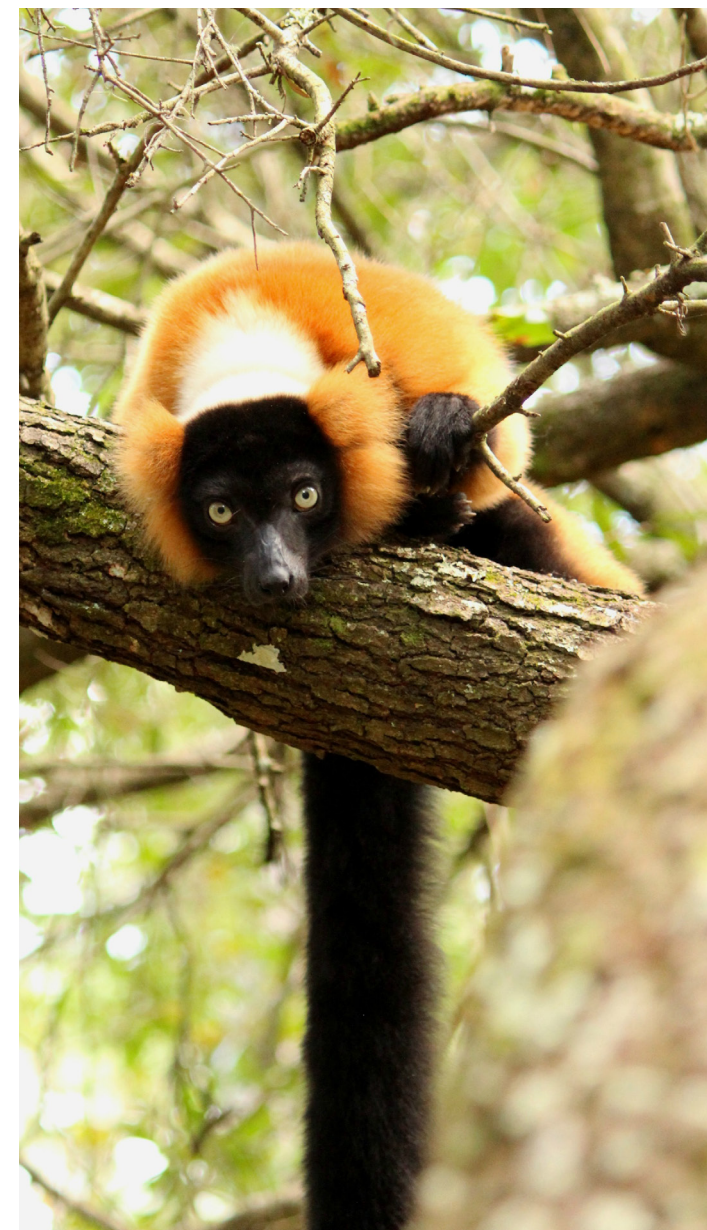
IN MEMORY

- Kathryn Bishop *in memory of Kay and Bart Bishop*
- Carolyn Blankenship *in memory of Spencer Blankenship*
- Michael Brehler *in memory of 13 kidnapped Ringtailed Lemurs of Tier- und Freizeitpark Thüle*
- Ray Burnett *in memory of Gladys Lippincott*
- John Freeman *in memory of John. A. Freeman, Jr.*
- Bobbie Grand *in memory of Willie Mae Bacot*
- Jessica Meyer *in memory of Gidro, b&w ruffed lemur, 4/22/16-9/18/16*
- Monica Mogilewsky *in memory of Dr. Bob Sussman*
- Mark Ormond *in memory of Jan Silberstein*
- Dr. Jennifer Swanson *in memory of John A. Freeman, Jr.*
- Bucky Wetherell *in memory of Gladys Lippincott*

IN HONOR

- Eugene & Anne Beckstein/Beckstein Charitable Fund *in honor of Pat Pantello*
- Jacquelyn & David Bell *in honor of Elizabeth Moore*
- Jean Blackburn *in honor of Penelope Bodry-Sanders*
- John & Elizabeth Dayani *in honor of Pat Pantello*

- Francine Dolins *in honor of George A. Garcia*
- Jamie Dowling *in honor of Ikoto and Antoine*
- Sue & Bartlett Geer *in honor of Elizabeth Moore*
- Rebecca Gutberlet *in honor of Tiffany Hudson*
- Terry Hudson *in honor of Tiffany Hudson*
- Caitlin Kenney *in honor of Eulemur fulvus group*
- Ben Lippincott *in honor of Kate Lippincott*
- Virginia Lippincott *in honor of Kate Lippincott*
- Noralyn Marshall *in honor of Gail Erikson*
- Ron Meadows *in honor of Kate Lippincott*
- Lee Nesler *in honor of Merced*
- Jennifer Grand Shuffler *in honor of Alison Grand*



VOLUNTEERS

Volunteers have always had a meaningful impact on LCF. They have chipped in to work on infrastructure, grounds maintenance, the Bladstrom Library, landscaping, and various projects related to lemur care. In 2016, volunteers helped proofread Ako lessons, developed enrichment for lemurs, assisted with diet preparation, and helped maintain the grounds, among other tasks. We are exceptionally grateful for their help.



THEN University of Miami volunteers from 2008 design enrichment.

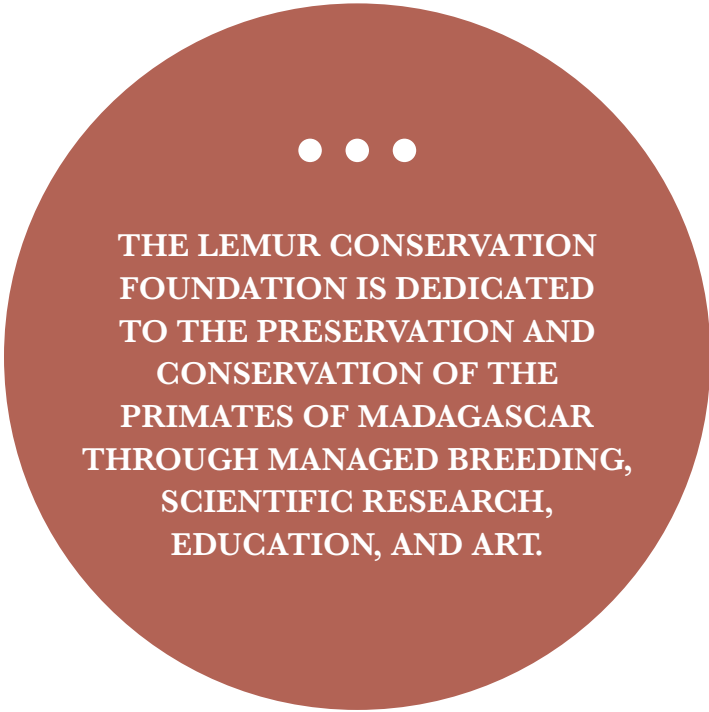
- Evan Near
- Jessica Franco
- Tim O'Brien
- Linda Taylor (*and students plant bushes*)
- Kevin Coomber
- Katie Jones (*Open House*)
- Chelsea Weibel (*Open House*)
- Juan Carlos Castillo (*Open House*)
- James Locke (*Open House*)
- Sara Futch (*Open House*)
- Matt Stierhof (*Open House*)
- Anna Hatch (*Open House*)
- Ashleigh Kortlever (*Open House*)
- Brandon Marshall (*Open House*)
- Andrew Alba (*Open House*)
- Bella Cali (*Open House*)
- Lisa Cali (*Open House*)
- Anthony Cali (*Open House*)
- Kris Becker (*Open House*)
- Munir Ben Jemaa (*Open House*)
- John Near (*Open House*)
- Richard Lore (*Open House*)
- Carolyn Bohlman (*Open House*)
- Hannah Sorrell (*Open House*)
- Ahira Doroshin (*Open House*)
- Ginny Hamilton (*Open House*)
- Joanna Robinson (*Open House*)
- Patricia Coomber (*Open House*)
- Sylvia Whitman (*Open House*)
- Ariana Borges (*Open House*)
- Kimberly Brubaker (*Open House*)

THEN Florida Gulf Coast University volunteers planting a tree in 2010.





NOW Open House volunteers from Disney's Animal Kingdom



THE LEMUR CONSERVATION
FOUNDATION IS DEDICATED
TO THE PRESERVATION AND
CONSERVATION OF THE
PRIMATES OF MADAGASCAR
THROUGH MANAGED BREEDING,
SCIENTIFIC RESEARCH,
EDUCATION, AND ART.

P.O. BOX 249, MYAKKA CITY, FL 34251
(941) 322-8494 · WWW.LEMURRESERVE.ORG

BOARD OF TRUSTEES

CHAIR Scott Riviere

VICE-CHAIR Penelope Bodry-Sanders

SECRETARY Kate Lippincott

TREASURER Charlene Heiser Wolff

John Alexander

Dr. George Amato

Blair Brown

John Freeman

Diane Ledder

Katharine McKenna

Kathy Miller

Elizabeth Moore

Patrice Pantello

Judy Rasmuson

Razia Said

Dr. Jessie Williams

SCIENTIFIC ADVISORY COUNCIL

Dr. George Amato

Dr. Kenneth E. Glander

Dr. Thomas Lovejoy

Dr. Erik Patel

Dr. Steig Johnson

Dr. Ian Tattersall

Dr. Linda Taylor

Dr. Natalie Vasey

ADMINISTRATION

EXECUTIVE DIRECTOR Dr. Alison Grand

DIRECTOR OF DEVELOPMENT Tora Buttaro

OFFICE MANAGER April McQuaig

CONSERVATION, EDUCATION & RESEARCH

CONSERVATION PROGRAM DIRECTOR Dr. Erik Patel

MADAGASCAR PROGRAM MANAGER Louis Joxe Jaofeno

CONSERVATION PROGRAM MANAGER Devin Edmonds

LEMUR CARE & RESERVE MAINTENANCE

VETERINARIAN Dr. David Holifield

ZOOLOGICAL MANAGER Caitlin Kenney

KEEPER Tiffany Hudson

KEEPER Katie Virun

MAINTENANCE TECHNICIAN Pete Shover