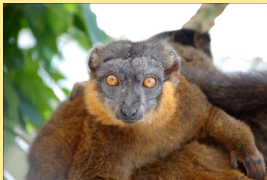




LEMUR CONSERVATION FOUNDATION

Lemur Latitudes
e-newsletter April 2013
www.lemurreserve.org



DONATE HERE

QUICK LINKS

LCF WEB SITE
www.lemurreserve.org

AMAZON WEB STORE:
[LCF Madagascar Lemur Shop](#)

[LIKE US ON FACEBOOK!](#)



Madagascar... like no place else on earth

EXPLORE is proud to be partnering with the Lemur Conservation Foundation and Dr. Ian Tattersall in offering this extraordinary trip to Madagascar!

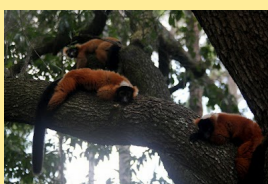
CONSERVATION IN ACTION

An In-depth Exploration of Madagascar
with Dr. Ian Tattersall
August 10-27, 2013



There's more to do in Madagascar than lazing on a sandy beach and dipping into crystalline waters to peek at coral reefs now and again. Madagascar's forests are home to lemurs, chameleons, periwinkles and baobabs, aloes, geckoes, sifakas and octopus trees. Cut off from the African mainland for millions of years, Madagascar's teeming forests have been preserved so that you will find flora and fauna that exist nowhere else in the world. **[READ MORE about the trip and how you can come along by clicking here.](#)**

Is visiting the LCF
Myakka City



**Lemur Reserve
on your to do
list? Click here
to watch *Wild
About Animals***

Filmed at the LCF
Myakka City
Reserve, and
narrated by Mariette
Hartley along with
former LCF staff
member Monica
Mogilewsky.

Monica is now at
Portland State
University pursuing
her doctorate
degree.

We will welcome
her back to LCF this
summer with Dr.
Natalie Vasey's Field
Training School.



**FLOWER
POWER!**

Are you planting a
spring garden?

Every bulb in your
garden can help care

Spend 16 days experiencing the spectacular biodiversity of Madagascar and have the chance to interact with various types of lemurs and other species that exist nowhere else on Earth.

Once in a lifetime opportunity to travel with world-renowned lemur expert, Dr. Tattersall.

- Explore the rainforests of Andasibe and Mantadia National Parks.
- Hear the haunting call of the Indri-Indri, the world's largest lemur.
- Discover the majestic beauty of Isalo National Park.
- Visit the stunning northwest coast of Anjajavy.
- Stay in Madagascar's top lodges as well as some charming and more remote camps.



Dr. Ian Tattersall

Dr. Ian Tattersall is currently Curator Emeritus in the Division of Anthropology of the American Museum of Natural History in New York City. Born in England and raised in East Africa, he has carried out both primatological and paleontological fieldwork in countries as diverse as Madagascar, Vietnam, Surinam, Yemen and Mauritius.

Trained in archaeology and anthropology at Cambridge, and in geology and vertebrate paleontology at Yale, Tattersall has concentrated his research since the 1960s in three main areas: the analysis of the human fossil record and its integration with evolutionary theory, the origin of human cognition, and the study of the ecology and systematics of the lemurs of Madagascar.

His current major research interest lies in systematics within the genus *Homo* and in the origin of modern human cognition as it relates to more general patterns of innovation in the hominid family.

[READ MORE about Dr. Tattersall at The American Museum of Natural History's web site.](#)

for our lemurs!

When you shop for spring bulbs with **FLOWER POWER** 50% of your purchase is donated to LCF.

[CLICK HERE](#) for a catalog of spring bulbs and more information about **FLOWER POWER!**



THANK YOU!

You helped us earn over \$8,600 during the 36-HOUR GIVING CHALLENGE.

That's enough for an additional dome structure in the Toomey Forest!

Check out the Thank You slide show on YouTube

[CLICK HERE To Watch](#)

LCF Women in Science



The Lemur Conservation Foundation was established in 1996 as the Lower Primate Conservation Foundation by Penelope Bodry-Sanders. During the years that followed LCF has become a leader in the conservation and preservation of the primates of Madagascar through programs dedicated to scientific research, education, and a commitment to incorporate art into our programs.

Ms. Bodry-Sanders forged lasting partnerships with leaders in conservation biology and generous, committed donors. Her inspiration, vision, and leadership guided LCF to become a respected voice for science, conservation, education, art, and lemurs, the iconic image of the conservation challenges and environmental stewardship facing Madagascar and the world today. [READ MORE](#)

In honor of International Women's Day, we would like to thank the accomplished women who make such important contributions to our organization, and to conservation biology. You can read about the [LCF TEAM HERE](#), and see profiles of LCF's women scientists on our [FACEBOOK](#) page and on our [BLOG](#).

Saving Lemurs Through Art & Fashion

LCF is a unique conservation organization that infuses art into all aspects of its mission. Here is a glimpse of the dress designed by LCF founder and Board Vice President Penelope Bodry Sanders, and modeled by LCF Animal Care Technician Cait Flanagan, for the 'iconcept Couture Runway Event' to benefit Art Center Sarasota on Friday April fifth.

If you would like more information, or to attend the event, you can visit: www.artsarasota.org/iconcept2013

The Giving Partner, and the Community Foundation of Sarasota County's 36-HOUR GIVING CHALLENGE raised over \$2,000,000 for more than 300 nonprofits in our community.

Thanks, lemur lovers, and our g-r-e-a-t Community Foundation! This was our first year participating...so super thanks for a wonderful, successful event.



Easter At The Reserve

Here are a few pictures from the Easter egg hunt enrichment activities on Sunday morning, featuring Oliver! Oliver is a three year old collared lemur (*Eulemur collaris*) and as you can see he enjoyed the hunt. Ollie's Easter Eggs were filled with treats lemurs love, like carrots! MMMMM...MMM, good!



Contact Info:

LCF Executive Director & CEO

Lee Nesler

941-322-8494