



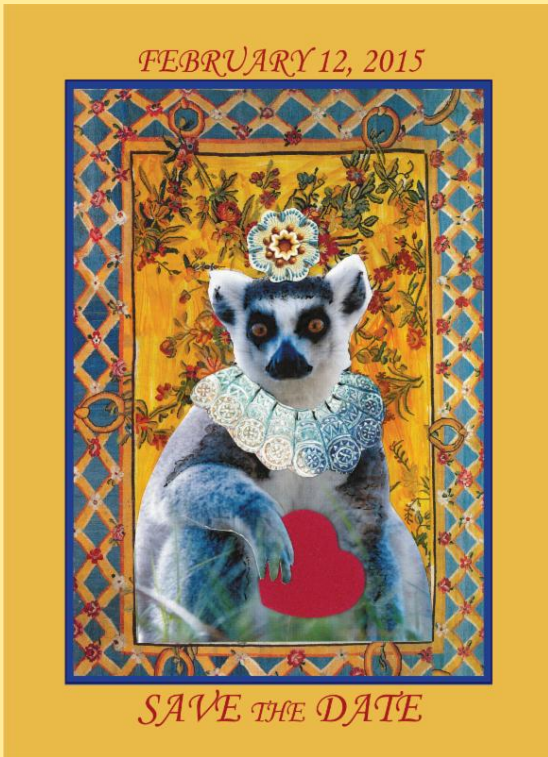
Photo by Caitlin Kenny  
www.lemurreserve.org



LEMUR  
CONSERVATION  
FOUNDATION

E-ulemur Latitudes  
[www.lemurreserve.org](http://www.lemurreserve.org)  
December 2014





Join us for an 'Evening of Lemur Love'  
[CLICK HERE](#) for more information.




Dear Friends,

It was my privilege to spend the month of August in Madagascar with Dr. Ian Tattersall and a wonderful group of committed conservation travelers. Together we visited some of Madagascar's natural treasures, and saw communities and ecosystems working hand in hand for some notable successes.


I also had the chance to speak with some of the country's leading conservation professionals and educators about the challenges and opportunities they face. It is inspiring to see such programs like the World Lemur Festival originating in Madagascar and inviting AZA participants around the world to participate. Our colony, our colleagues in Madagascar, and our partnerships with zoos, schools, community organizations, businesses and supporters like you are working towards our common goal: A future with vital populations of lemurs and thriving communities living in priceless natural areas.

I invite you to join us with a special year-end gift to help us build upon our achievements in the coming year.

Sincerely,



Lee Nesler



[CLICK HERE TO DONATE](#)

[If you prefer to send your donation by mail you can find a gift form here.](#)



**Elena Krapcheva Films at LCF for National Geographic's 'Wild to Inspire' Short Film Contest**



© 2014 CAITLIN KENNEY

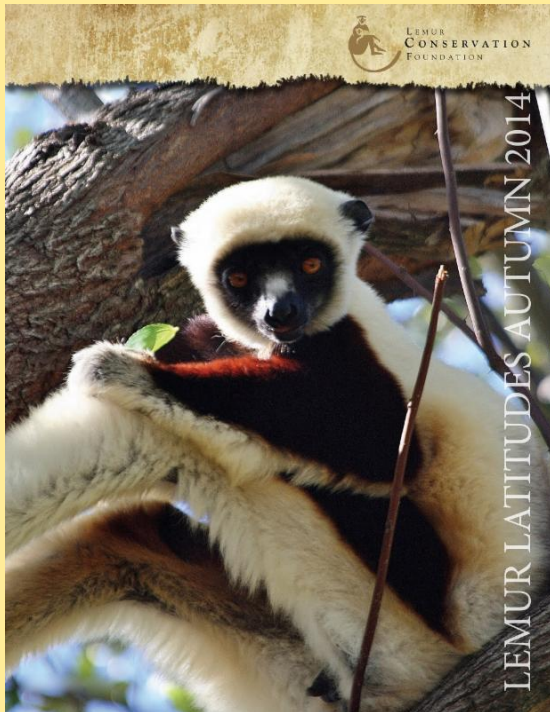
"I recently approached The Lemur Conservation Foundation (LCF) with a film enquiry. As I am looking to enter a National Geographic contest in January 2015, I wanted to feature LCF's furry residents and voice their important conservation story. Since the forest is closed to visitors, I thought I could share a glimpse of my experience with you ahead of the official competition video (please wish me good luck!)..."

The first time I walked into LCF's forest I was mesmerized by the beauty of the sunrise and the sounds of woods. Lemurs' home is absolutely enchanted...

**[CLICK HERE to watch a video Elena made about her experience at LCF.](#)**

I was introduced to Ansell and Yungling and their twin baby girls, who quickly became the stars of my video. The little ringtail family, together with Ikoto, "the loneliest Sanford's lemur on earth" will be featured in my film with a message of survival and hope. Their natural habitat is shrinking back home in Madagascar. Political unrest, aggressive deforestation, illegal logging and exotic pet trade have reduced the population of lemurs to critical numbers. We need to act now if we want to keep those beautiful primates on earth."

**[Visit Elena's website and read her blog here](#)**



**[CLICK HERE for your copy of Lemur Latitudes Autumn 2014 edition](#)**



**Caitlin Kenney Wins AZA Recognition in Photo Contest.**

Caitlin Kenney, a member of LCF's animal husbandry team and talented photographer, has won recognition in the Association of Zoos and Aquariums (AZA) photo contest. Her image of a ring-tailed lemur in LCF's forests will be featured in the [AZA's CONNECT magazine](#).

"We are so fortunate to have such a talented and ambitious member on the LCF team. Congratulations Caitlin! This is a great achievement for you, LCF, and lemurs."  
- Dr. Alison Grand, LCF Curator of Primates and Conservation



VISIT OUR WEB SITE

Caitlin is from North Attleboro, Massachusetts. She recently earned her B.S. in Conservation and Wildlife Management from Delaware Valley College. Caitlin was an Animal Care Intern at Buttonwood Park Zoo where she worked in the 'North America West' section and completed a training project with the Canadian Lynx. Caitlin came to LCF because it offers a chance to not only work with animals in a more natural setting but to work in a setting with a high research focus. After completing a Primate Husbandry Internship with LCF she joined the team as a Keeper.

"I'm delighted that my photo was picked as one of the finalists of the 2014 AZA photo contest and as a result published in the December issue of *CONNECT* Magazine. Conserving nature and the vast variety of life found on this planet is essential to me. I love capturing the spirit and personality of each individual animal, providing a connection that shows these amazing animals are worth the time and effort to save."  
- Caitlin Kenney



Spices from Madagascar in our Amazon Shop!

[Visit our Amazon Shop](#)



© 2014 CAITLIN KENNEY

### Cookie Enrichment

Everyone loves Christmas cookies! We made Santa some primate chow cookies frosted with pumpkin and raisins. Looks like our lemurs got to them first!

The 'recipe' includes primate chow, bananas, and applesauce to make a nice dough. Our husbandry team spreads the 'cookie dough' on a sheet pan, then refrigerates for ten or fifteen minutes before using cookie cutters to make fun, holiday shapes.


You can see that Emilia and Pablo like to dunk their cookies, while Bimbini, pictured on the left, takes a more direct approach!



© 2014 CAITLIN KENNEY



[CLICK HERE](#) to learn more about the Ako Project.

 Like us on Facebook

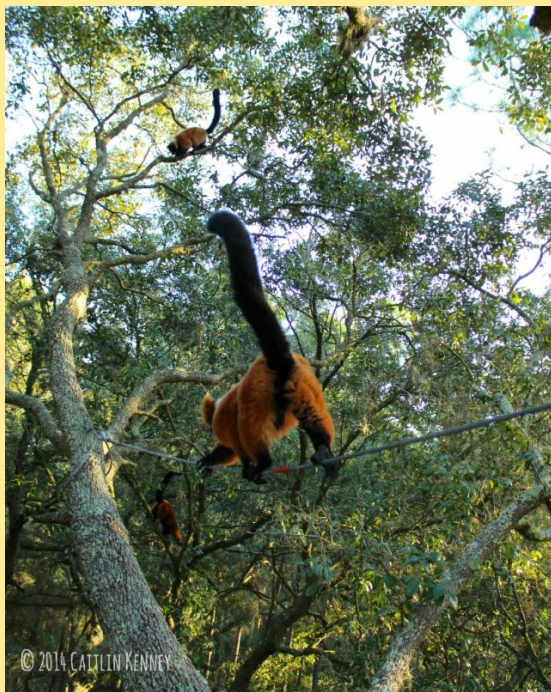
FOLLOW US ON *Pinterest*

View our videos on **YouTube**

Follow us on **twitter**



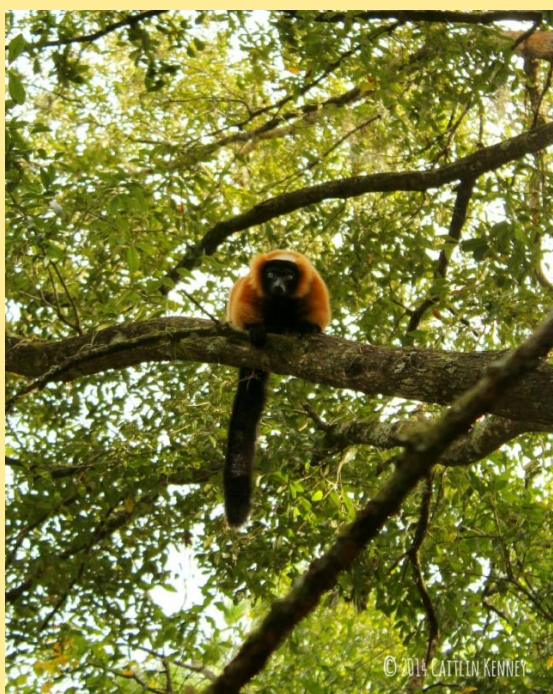
 Forward to a Friend



© 2014 CATTILIN KENNEDY



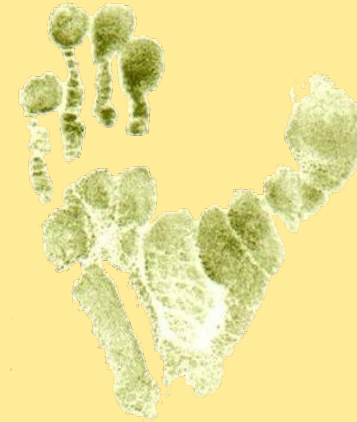
LCF's 2015 Calendar is Here!



Artist Richard Thomas created the art for LCF's 2015 calendar. Thomas is a fifth generation Floridian raised in the wilds of central Florida and passionate about its diverse flora and fauna. A born naturalist, he fell in love with the lemurs and brought his abiding artistic power and grace to his renderings of them for the Lemur Conservation Foundation Art Collection.

As a special thank you, all LCF supporters with gifts of \$500 and higher will receive the calendar. You can order calendars with the link below.

[CLICK HERE to order your calendar.](#)



**THANK YOU FOR YOUR SUPPORT**

**Contact Info:**

LCF Executive Director & CEO

Lee Nesler

leenesler@lemurreserve.org

941-322-8494